



April 2021 Community Newsletter



MURRAY

Ideas for Can Placement on Windy Days



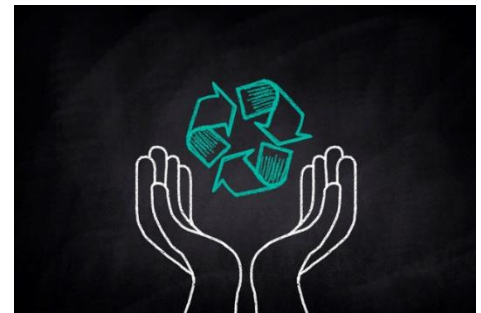
When the wind is blowing, you may want to turn your can facing sideways to the street. This will help ensure that lightweight items, like plastic bags and loose paper, do not fly out and litter your neighborhood.



We ask that you not place the can with the lid hinge towards the street. That makes it harder for our collection trucks to successfully empty your can.

Remote Recycling Education for Schools

So far, in 2021, our Sustainability Team has provided education to 31 classes at 13 different elementary schools throughout the District remotely. Our team still has availabilities to conduct more remote classes. If you are a teacher, or know of a teacher, who is interested in this opportunity; contact our Sustainability Coordinator, Ethan Morris, at EMorris@wasatchfrontwaste.org or 385-468-6337.



Poster photo created by dashu83 - www.freepik.com

Recycling Guide
All Items must be EMPTY and DRY

Plastic Bottles, Tubs, Jugs, & Jars (no lids)

Metal, Aluminum, & Empty Aerosol Cans

Cardboard, Mixed Paper (Office/Junk), Paperboard & Paper Bags

Wasatch Front Waste & Recycling District
604 West 6960 South, Midvale, Utah 84047
Phone: (385) 368-6325 • Fax: (385) 368-6330
[info@wasatchfrontwaste.org](http://info.wasatchfrontwaste.org) • www.wasatchfrontwaste.org

Recycling

As the recycling industry stabilizes, many organizations are creating new and innovative ways to recycle the materials we use daily. From paper to plastic to cardboard, we are working hard to find new opportunities to accept more materials and make sure they are being recycled in the most environmentally friendly way possible. Make sure to take the time to familiarize yourself with items that are currently recyclable by using our new recycling guides, found on our [Facebook page](#) and [website](#). By reducing contamination, we can continue to keep costs low for all of our residents. Remember, when in doubt, throw it out!

