

All water and contaminants that enter storm drains go directly into our environment.

Storm drain contamination is one of the major causes of pollution in our rivers, lakes and streams. Pollution of stormwater runoff can negatively impact our environment and introduce unnecessary risk to public health and safety, ultimately affecting the livability of Murray City and surrounding communities. To control stormwater, local cities and counties operate and maintain a system of underground pipes and catch basins to transport rain and snow melt into the ground, rivers and streams. This water does not get treated so we need to keep contaminants out of our storm drains.



Storm drains do NOT treat the water that flows into them. Disposal of RV, pet waste and other pollutants into the storm drains is illegal.



Storm drains do NOT protect fish, rivers and streams. There is no difference between pouring pollutants down a storm drain and dumping them directly into the river.



Storm drains do NOT prevent flooding when clogged. Dirt, grass clippings, leaves and other debris left in the road contribute to flooding.



Storm drains are NOT designed to treat polluted runoff. When you hose off sidewalks, overwater your yard or wash your vehicle in your driveway, all the water, soap and debris ends up in the storm drains. All contaminants will affect the quality of our waterways.



WE ALL LIVE DOWNSTREAM...

Keep Murray City clean. Keep contaminants away from ALL storm drains.

Stormwater systems can be found throughout Murray City and include ditches, catch basins, curbs, underground pipes, ponds, swales and dry wells. These structures carry stormwater to outfalls on local rivers or allow the stormwater to drain into the ground. Contaminants discharged into stormwater systems can pollute surface waters as well as ground water.

A clean stormwater system helps our community by:

- Preventing flooding of personal property and/or damage to public infrastructure, including roads.
- Minimizing foul odors and maintaining aesthetically pleasing neighborhoods.
- Keeping our rivers, lakes and streams clean.
- Strengthening our economy by offering healthy recreational opportunities.

An antifreeze, batteries, oil and paint (ABOP) waste facility is located at Murray City Public Works, 4646 South 500 West. Business hours are Monday through Friday, 7 a.m. to 3 p.m. (Call 801-270-2440 for more information)

The Murray City facility ONLY accepts antifreeze, batteries, oil and paint.

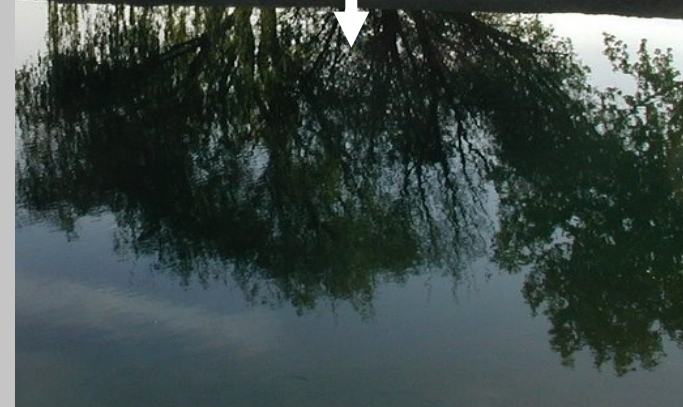


STORM DRAINS:

Do you know where the water (and any debris) goes?



We bet you'll be surprised





WE EXPECT CLEAN WATER AND HEALTHY WILDLIFE when hiking, fishing and recreating in or around the water. However, clean water cannot be taken for granted. Our actions affect the waters around us each and every day. All of the water from our property that enters a storm drain ends up in our rivers, lakes and streams. When it rains or snows, the water must go somewhere. Without controlling the flow of rain and snow melt, our community could be damaged. Uncontrolled stormwater causes flooding, unclear waterways and unhealthy communities.



Tips to prevent debris and pollutants from entering our storm drains:



1 Wash vehicles at the **carwash** not on the street or driveway.

2 Use absorbent materials to clean up all spills & leaks and dispose of properly.



3 Recycle **motor oil**, antifreeze and other fluids.

4 Evaporate rinsewater from painting supplies and dispose of waste. Properly dispose of household hazardous waste at landfills or community events.

5

Keep litter out of the storm drain system. If you see it, **pick it up.**

6

Always pick up pet waste. Scoop it, bag it, trash it.



Every dog, every doo, every time.

7

Put yard waste in your **black can.** Do not rake, blow or hose leaves, grass clippings, or yard debris into the street, gutter or storm drain.



8 Direct downspouts and rain gutters **away from paved surfaces.**

9

If landscape **stockpiles** must be in the streets or sidewalks, cover and completely contain them with sediment controls.



10

Set sprinklers to water the lawn and garden only **not pavement.**



11

Use fertilizers, herbicides and pesticides **sparingly.**

12

Use a nozzle on garden hoses to prevent water **run-off** when not in use.



PROTECT OUR COMMUNITY. REPORT ILLEGAL DUMPING INTO STORM DRAINS:
Murray City (801) 270-2440—After hours and holidays call (801) 264-9669